



Hair Removal Skin Rejuvenation

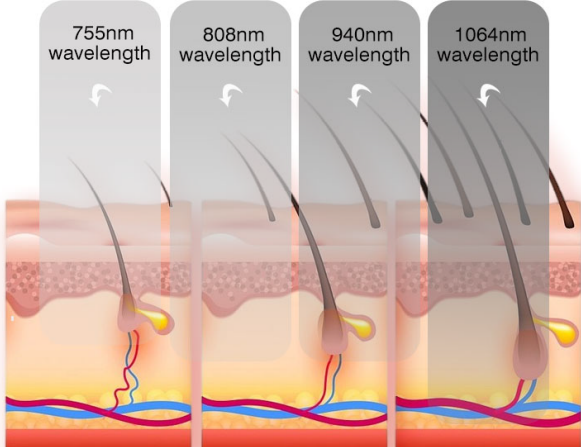
755nm 808nm 940nm 1064nm 1500W Diode Laser



2
Years Warranty
Limitless Shot

Continuously
Work for
24
Hours

Advantages of Four Wavelengths Hair Removal



755nm, 808nm, 940nm, 1064nm

Four different wavelengths
act on different depths of the skin

4 Changeable Spot Sizes



German LIMO
gemstone light
guide crystal



Adjustable Window
Design in Handpiece

Freely Switch Between Skin Rejuvenation & Hair Removal Modes

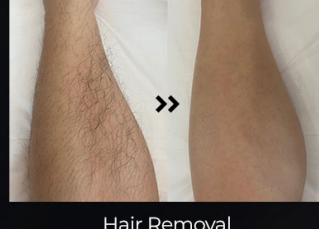


1-20Hz high-frequency sliding provides
a strong guarantee for operational efficiency

Significant Effects



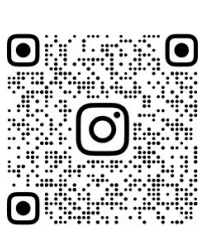
Skin Rejuvenation



Hair Removal

S500 Parameters

Laser Type	Diode Laser	Screen	15.6 / 15.4 Inch Industrial Capacitive Touch Screen
Wavelength	755/808/940/1064 nm	Voltage	AC220V 50/60Hz
Spot Size	Φ6mm / 12*12 / 12*24 / 12*36 mm	Power of Machine	1850W
Working Model	Rejuvenation--SR/BSR/PSR Hair Removal --SHR/HR/BHR/PHR	Cooling System	TEC Electronics Cooling+Variable Frequency Compressor Cooling+Air Cooling
Energy Density	1-120J/cm ²	Working Temperature	15-35°C
Frequency	1-20Hz	Dimension/G.W	1080*366*626mm(L/H/W)



instagram



ciellululaser.com



facebook